

---

EPSON SOLUTIONS FOR  
AIR TRANSPORT OPERATIONS

---

# FIRST-CLASS PASSENGER PROCESSING

**EPSON**<sup>®</sup>  
EXCEED YOUR VISION

---

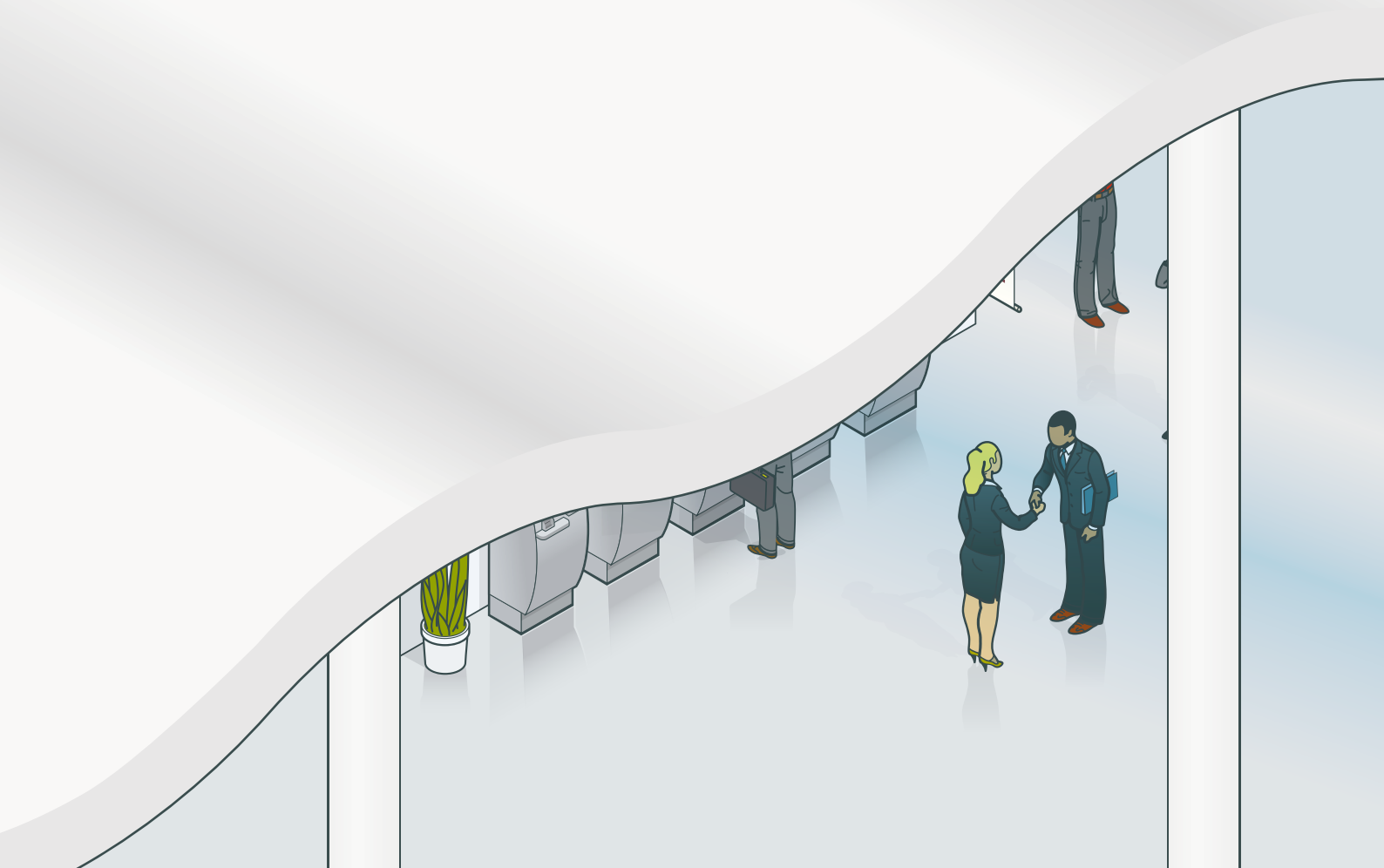
---

# 40 YEARS OF EXPERIENCE AND INNOVATION

---

Four decades of experience in printing, combined with our position as the European number one supplier of POS printers and our well-established relationships with the airline industry, make Epson ideally placed to fulfill airport passenger processing requirements. From check-in to boarding, Epson printers bring enhanced efficiency and reduced operating costs to airlines and airports. And, drawing on our expertise in defining industry standards, we're committed to supporting IATA's CUPPS initiative for next-generation airport software platforms, protecting the future of your investment.

**Epson printers have been easily integrated into the airlines' PC-based systems and they have proven to be extremely reliable in this environment, where thousands of boarding passes are printed every day.**  
Kris Kristmanns, Director of Operations Support for Servisair



# CHECK-IN DESK

Free up passenger flow at this traditional bottleneck and present an efficient, passenger-friendly first impression. Built to fit easily into virtually any airline structure, Epson direct thermal printers are built for high performance baggage tag and boarding pass printing.

## Epson TM-L500A

### Boarding pass and baggage tag

With a compact footprint, 2-in-1 BCBP and BTP design and CUPPS compliance, this thermal printer is a hard-working, reliable addition to any check-in desk.



- BCBP and BTP in one
- AEA 2009 command set support
- CUPPS compliant
- High speeds up to 250mm/sec
- Integrated autocutter
- Paper roll holder
- RFID option

## Epson TM-L90

### Boarding pass

This is the ideal drop-in replacement for existing thermal airline printers. With its ultra compact design and the ability to handle thick paper, this printer is ideal for check-in counters.



- Handles thick paper and tickets
- AEA 2007 command set support
- Drop-in paper roll exchange
- Partial/full autocutter
- Windows printer driver
- Sturdy and durable

## Epson TM-C3400

### Vouchers and coupons

Print colourful coupons and vouchers for your passengers in an instant, with this high speed inkjet printer.



- Print in full-colour on-demand
- Fast speeds up to 92mm/sec
- USB/Ethernet interfaces
- Autocutter
- Print up to 5000 sheets with 1 inkset

# SELF-SERVICE KIOSK

As a leading manufacturer of printing mechanisms Epson are the perfect choice for passenger self check-in kiosks. Give customers more control, reduce queues and enhance the airport experience with fast, reliable high quality Epson printing.

## Epson BA-T500II/M-T500II Series

### Boarding pass and baggage tag

Our thermal kiosk printers deliver high-speed printing and industry-leading reliability. The amazingly fast M-T500II series mechanism prints up to 250mm/s in combination with the Epson BA-T500II control board, even in full-graphic mode.



- Supports thick paper and tickets
- Straight and drop-in paper path
- Partial/full autocutter
- Windows printer driver
- Sturdy and durable

## Epson EU-T300/EU-T400 Series

### Boarding pass and baggage tag

Our proven thermal kiosk printers are complete drop-in solutions featuring best-in-class components, high-speed printing and industry-leading reliability.



- Drop-in paper roll with semi-automatic loading function
- Fast printing speeds up to 150mm/sec
- Upgradeable firmware and interface options
- Modular design for easy maintenance

# BOARDING GATE

Process passengers quickly and efficiently with Epson printers at the boarding gate. They smooth the final stages of the airport experience and can help you to handle any unexpected flight schedule changes quickly and efficiently.

## Epson FX-890A

### Passenger list

The fastest in its class, this full-featured, 9-pin, 80 column impact printer offers the speed and reliability needed for printing passenger manifests.



- Long ribbon life ensures lowest cost per page
- Fastest printer in its class
- Best reliability in its class
- Prints single sheets and up to 7-part forms
- Windows printer driver

## Epson TM-L500A

### Boarding pass

This thermal printer is fast and reliable, with compact dimensions that make it fast and easy to integrate and position on a desk where space is at a premium.



- Compact, modular design
- AEA 2009 command set support
- Microsoft Windows driver
- IATA R740/RP1740 support
- High speeds up to 250mm/sec
- Integrated autocutter

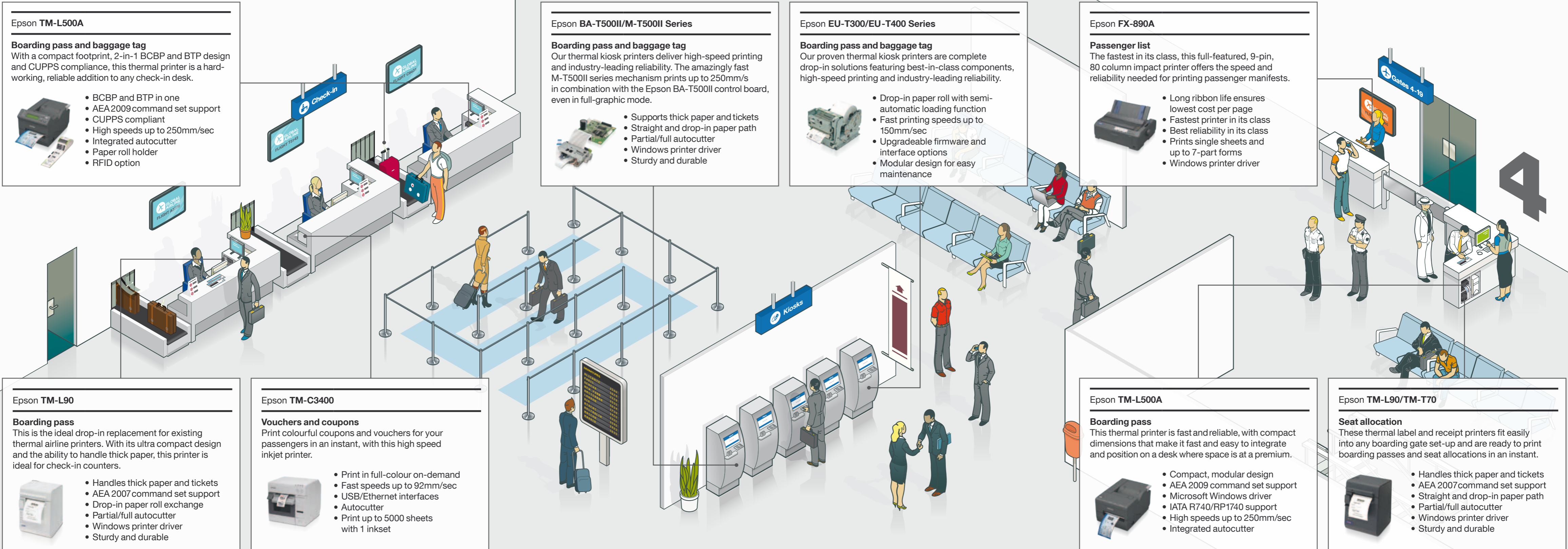
## Epson TM-L90/TM-T70

### Seat allocation

These thermal label and receipt printers fit easily into any boarding gate set-up and are ready to print boarding passes and seat allocations in an instant.



- Handles thick paper and tickets
- AEA 2007 command set support
- Straight and drop-in paper path
- Partial/full autocutter
- Windows printer driver
- Sturdy and durable



4

# WORLD-WIDE SERVICE

In the fast-paced, high-pressure world of air transport, you need solid reliability and support to ensure everything runs smoothly. At Epson, we work hard to give you the support you need to help keep both your business and passengers moving.

Epson CoverPlus offers a range of service and support options so you can choose the level of support you need, or let us work out a bespoke solution based on your needs or budgets. With an extensive global service network and a track record of exceeding our clients' expectations, our commitment to service is second to none.



Epson's global service network

## COMMITTED TO A BETTER FUTURE

At Epson, we know that planning for the future requires strong commitment to the environment. That's why we strive to create innovative products that are reliable, recyclable and energy efficient. Better products that use fewer resources reduces our impact on the environment and help to ensure a better future for us all.

The specific goals of our 'Environmental Vision 2050' initiative include:

1. Reduction of CO2 emissions by 90% across the entire product lifecycle
2. Inclusion of all products in the resource, reuse and recycling loop
3. Reduction of direct CO2 emissions by 90% and elimination of global warming gas emissions other than CO2
4. Restoration and preservation of biodiversity as a member of the ecosystem, together with local communities



Better Products  
for a Better Future™



For further information please contact your local Epson office or visit [www.epson.com](http://www.epson.com)

Austria 0810/20 01 13 (0,07 €/Min.) Belgium 070/350120 (0,1735 €/min.) Czech 800/142 052 Denmark 44 50 85 85 Finland 0201 552 091 France 09 74 75 04 04 (0,12€/min) Germany 01805/23 41 10 (0,14 €/Min.) Greece 210-8099499 Hungary 06800 147 83 Ireland 01 436 7742 Italy 02-660321 10 (0,12 €/min.) Luxembourg 900/43010 (0,24 €/min.) Middle East +9714 8818934 Netherlands 0900-5050808 (0,05 €/oproep + 0,15 €/min.) Norway 22 06 42 80 Poland 0-0-800 4911299 (0,16 zł/min.) Portugal 707 222 111 Russia (095) 777-03-55 Slovakia 0850 111 429 South Africa (+2711) 465-9621 Spain 93 582 15 00 Sweden 0771-400135 (Mobilsamtal – 0,99 kr/min, Lokala samtal – 0,30 kr/min, Utlandssamtal – 0,89 kr/min) Switzerland 0848 448820 (4-8 cent./min.) Turkey (0212) 3360303 United Kingdom 0871 222 6702

Trademarks and registered trademarks are the property of Seiko Epson Corporation or their respective owners. Product information is subject to change without prior notice.

**EPSON®**